

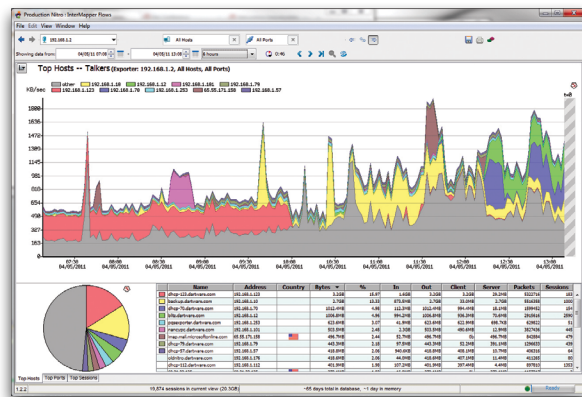
PRODUCT DATA SHEET

*“Flows is completely integrated with the main InterMapper program and is very useful for discovering over-burdened network spans and detecting and tracing unwanted traffic spikes.”*

—Mike Kernen, Chief Engineer  
Greater Media Detroit

## Network Flow Analyzer

InterMapper Flows™ is a tightly integrated component of InterMapper’s network monitoring, mapping and alerting suite. InterMapper Flows puts you one click away from identifying those bandwidth hogs on your network. It offers the network administrator an extraordinarily robust and flexible set of reporting parameters, enabling you to collect information on top talkers, top listeners, hosts, protocols and sessions. Since it’s capable of generating a broad overview of your network traffic, as well as detailed analytics, Flows gives you the all the data you need to maximize your network’s health.



### ABOUT DARTWARE

Dartware is a leading developer of network monitoring, mapping and alerting software. Our flagship product, InterMapper® is an easy to configure and fully featured management tool. It is integrated with a reporting package, a Layer 2 discovery module and a robust NetFlow analyzer. Available for major operating systems, these innovative tools earn quick return-on-investment by proactively notifying administrators to potential hardware, software and bandwidth issues that could cause business interruptions. Powered by an extensive library of probes, its color-coded maps and graphical reports provide a real-time view of any device on the network. More than 25,000 IT professionals worldwide use InterMapper as a cost-effective way to maximize network uptime.

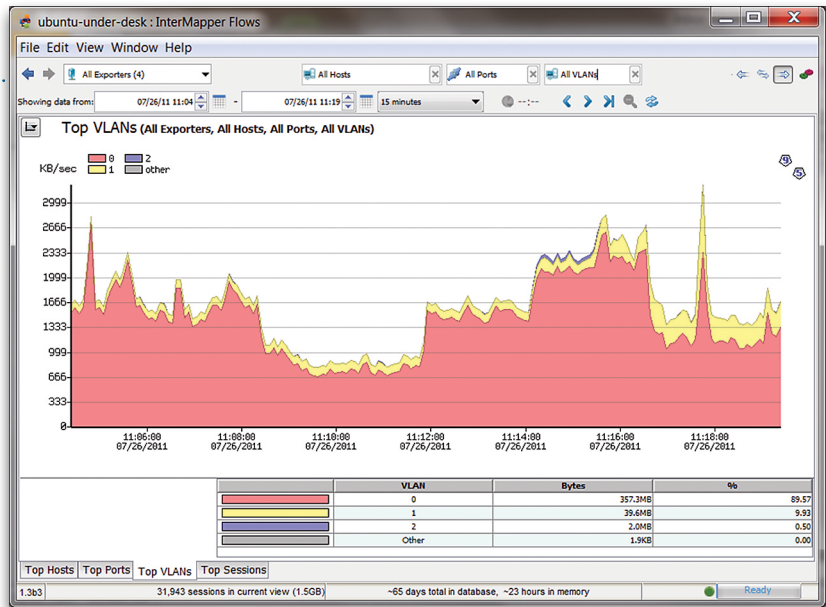
[www.intermapper.com](http://www.intermapper.com)

### DIFFERENTIATING FEATURES

Feature	Benefit
<b>Highly accurate and complete</b>	<ul style="list-style-type: none"> <li>Retains all data, not just summary/aggregate data</li> <li>Data is collected with sub-millisecond accuracy</li> </ul>
<b>Extremely granular real-time data view</b>	<ul style="list-style-type: none"> <li>Clearly describe the full activity of interest in real-time</li> <li>No pre-filtering required for full historical analysis</li> </ul>
<b>Historical reporting</b>	<ul style="list-style-type: none"> <li>Pinpoint bandwidth hogs and chart their behavior</li> </ul>
<b>Vendor agnostic</b>	<ul style="list-style-type: none"> <li>Drill down to a specific device, interface, subnet or VLAN</li> <li>Further drill downs to reveal specific session data and low-level activity</li> <li>Filter and sort to support data queries</li> <li>Generates visually compelling reports that export easily</li> <li>Stores Flow data over time for trend analysis</li> </ul>
	<ul style="list-style-type: none"> <li>Analyzes NetFlow, sFlow, jFlow and cFlow</li> <li>Works with all major traffic protocols</li> </ul>

## Network Flow Analyzer

Most Flows products at our price point merely summarize and aggregate data, but with InterMapper Flows, all data can be analyzed immediately and no other products work across all major operating systems



## CAPABILITIES

### Network Traffic Troubleshooting

- What explains the sharp traffic increase every Saturday at 3:00 am?
- Who is generating the most traffic?
- Could specific site blocking solve your heavy traffic problem?

### Capacity Planning

- Do you have enough bandwidth to support mission-critical activity?
- Is recreational or illegal activity consuming your network bandwidth?
- Who is hogging bandwidth?

### Network Forensic Investigation

- Who are your Top Talkers and who are they "talking" to?
- What web servers are routinely visited and how much data is downloaded?
- Are there any signs of rogue network applications or malicious activity?

### Easy to Use

- Right-click Whois information availability
- High level summaries provide right-click access to underlying data
- Country flags note origin of network traffic
- Runs in Windows, Mac and Linux

## SEE FLOW DATA BROKEN OUT BY

- Device
- Interface
- Subnet
- Conversations
- VLANs
- Domains
- Endpoints
- Protocols
- Top talkers
- Top listeners
- Top hosts
- NetFlow v9,5,1
- sFlow v2,4

## FULLY INTEGRATED

- InterMapper
- InterMapper RemoteAccess

## SYSTEM REQUIREMENTS

- Windows 7/Vista/XP and Windows Server 2008/2003
- Mac OS X 10.5 and newer
- Linux distributions, including Red Hat, SUSE, Ubuntu and others

66 Benning Street, Suite 7  
West Lebanon, NH 03784 USA  
877.276.6903  
info@intermapper.com  
[www.intermapper.com](http://www.intermapper.com)

