

PRODUCT DATA SHEET

“InterMapper has been a gift from the heavens. No other platform can compare to the versatility, ease of use and reliability that it has afforded us. When it comes to real-time local and remote monitoring, paging and system status, regardless of the network size, InterMapper rules.”

—Robert A Moriarity
Director, Information Technology
Carlthorp School

FREE EVALUATION
DOWNLOAD



INTERMAPPER.COM/TRY-NOW

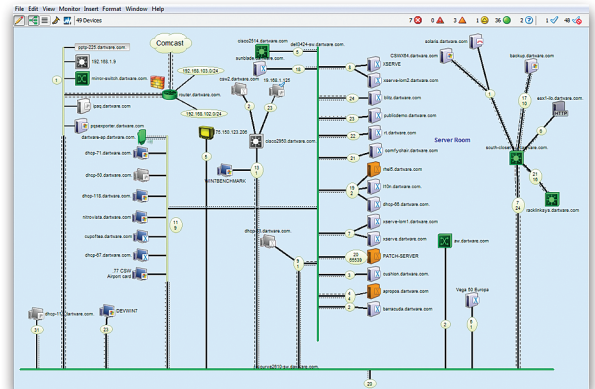
ABOUT DARTWARE

Dartware is a leading developer of network monitoring, mapping and alerting software. Our flagship product, InterMapper® is an easy to configure and fully featured management tool. It is integrated with a reporting package, a Layer 2 discovery module and a robust NetFlow analyzer. Available for major operating systems, these innovative tools earn quick return-on-investment by proactively notifying administrators to potential hardware, software and bandwidth issues that could cause business interruptions. Powered by an extensive library of probes, its color-coded maps and graphical reports provide a real-time view of any device on the network. More than 25,000 IT professionals worldwide use InterMapper as a cost-effective way to maximize network uptime.

www.intermapper.com

Network Monitoring, Mapping and Alerting

InterMapper is an industrial strength monitoring, mapping and alerting tool which empowers network administrators to maintain healthy IT environments. Having a live view of your network enables planning of hardware, software and bandwidth requirements to maximize uptime with minimal resources. InterMapper is affordable yet fully integrated with all the features you need to improve network reliability while reducing operating costs. Its efficient, low-bandwidth polling engine can scale to test thousands of devices. Whether your network is building-wide, campus-wide or world-wide, you'll know exactly what's going on—all from wherever you are located.



DIFFERENTIATING FEATURES

Feature	Benefit
Same-screen mapping and monitoring	
• A live, documented view of your network	• At-a-glance visibility into trouble spots
Real-time, high-speed polling and alerting	
• Variable polling intervals (30 seconds default)	• Proactively diagnose issues before network impact
• Customizable notifications	
Flexible architecture	
• Centralized or distributed polling minimizes WAN traffic	• Supports all network designs and equipment types
• Each server scales to monitor thousands of systems	
• Runs on most platforms (Windows, Mac, Linux, Solaris)	
Simplify complex network management	
• Fast download and install	• Quick ROI
• Easy configuration with auto-discovery	
• Fully integrated feature set	

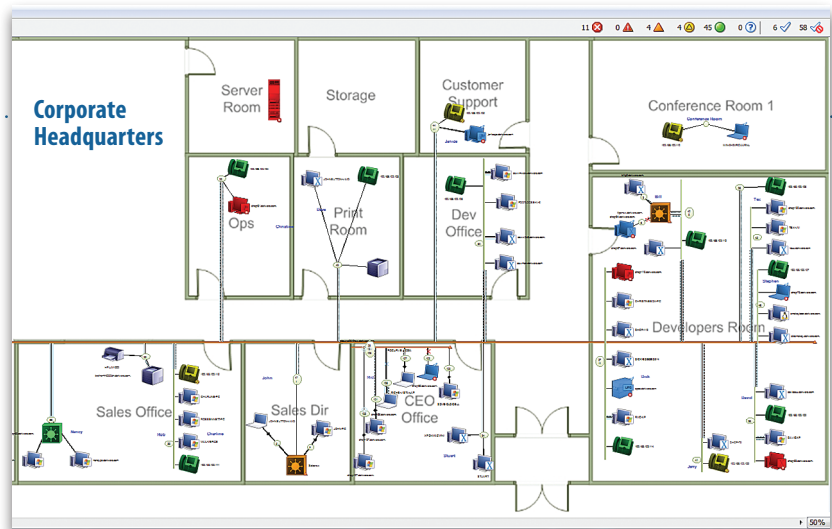
Network Monitoring, Mapping and Alerting

InterMapper provides an at-a-glance, real-time view of your network devices, services, applications, connections, and traffic patterns. Drilling down on maps and charts uncovers details needed to fix performance problems.

FREE EVALUATION
DOWNLOAD



INTERMAPPER.COM/TRY-NOW



CAPABILITIES

Real-time Monitoring

- Identifies hardware, software or traffic problems on the network
- Works with virtualized or cloud-based environments
- Real world testing of production systems (i.e. verify your e-commerce is up)
- Instant re-polling to see current status

Intelligent Mapping

- Automated discovery of Layer 2/3 interconnections
- Geographical and hierarchical views
- Documentation of network topology to support compliance
- Integration with Google Earth for distributed networks

Smart Alerting

- Configurable, multi-level notifications for warning, alarm, critical and up/down conditions
- Send alerts to e-mail, mobile phone (text/SMS), audible alerts, pagers, run scripts
- Set the alarms that matter to you, minimizing background noise
- Customizable threshold settings
- Escalation policies easily implemented

Valuable Information

- One-click charting of any data
- Stores historical data for trend analysis
- Comprehensive, web-based Reports module

PROBE ANY DEVICE

- Built-in probes monitor critical performance statistics on common equipment. Check availability/outages, packet loss, response time, traffic and error rates
- User-created probes can collect important data for custom applications. Download contributed probes from our library
- Monitor anything on a network: environmental sensors, facilities systems, industrial equipment, etc.

EXPAND YOUR FUNCTIONALITY

- InterMapper RemoteAccess
- InterMapper Flows

SYSTEM REQUIREMENTS

- Windows 7/Vista/XP and Windows Server 2008/2003
- Mac OS X 10.5 and newer
- Solaris SPARC, x86
- Linux distributions, including Red Hat, SUSE, Ubuntu and others



66 Benning Street, Suite 7
West Lebanon, NH 03784 USA
877.276.6903
info@intermapper.com

www.intermapper.com

